







List of authorized helmets as from 1st January 2023

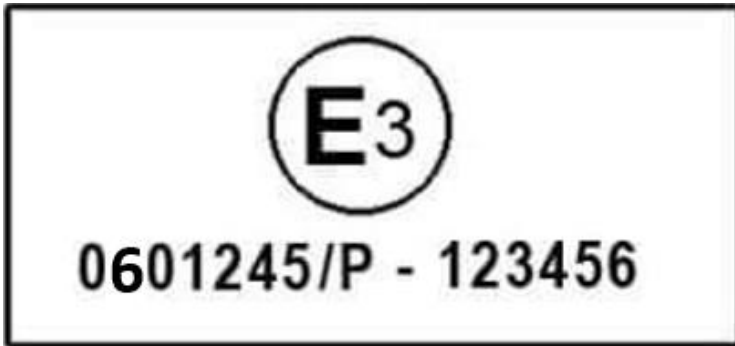
2023 Update (as from 1st January 2023):

- 1) The SNELL 2020 R standard is added.
- 2) The ECE 22-06 standard is added for unrestrained drivers ages 18 and older. The ECE 22-06 helmet use is permissible during a period extending from the manufacturing year plus 4 years.” [\(more details regarding the ECE 22-06 tag markings on page 3 of the document\)](#)

<p>FIA 8860-2018-ABP</p>	 <p>Helmet with ABP</p> <p>In compliance with: FIA Standard 8860-2018-ABP</p> <p>Manufacturer Name: Name of Manufacturer</p> <p>Serial N°: xxx xxx</p> <p>Model : Model Name</p> <p>Homologation N° : AH.XXX.XX-X-ABP</p> <p>Date of Manufacture: JAN 2018 Size: XS</p>
<p>FIA 8860-2018</p>	 <p>Helmet without ABP</p> <p>In compliance with: FIA Standard 8860-2018</p> <p>Manufacturer Name: Name of Manufacturer</p> <p>Serial N°: xxx xxx</p> <p>Model : Model Name</p> <p>Homologation N° : AH.XXX.XX-X</p> <p>Date of Manufacture: JAN 2018 Size: XS</p>
<p>FIA 8859-2015</p>	 <p>In compliance with: FIA Standard 8859-2015</p> <p>Manufacturer Name: Name of Manufacturer</p> <p>Serial N°: xxx xxx</p> <p>Model : Model Name</p> <p>Homologation N° : PH.XXX.XX-X</p> <p>Date of Manufacture: JAN 2015 Size: XS</p>
<p>FIA 8860-2010</p>	 <p>In compliance with: FIA Standard 8860-2010</p> <p>Manufacturer: Helmet Company</p> <p>Model: FXX031</p> <p>Homologation No: AH.XXX.XX-X</p> <p>Serial No: 57</p>
<p>Snell M 2015</p>	 <p>WARNING</p> <p>SOME REASONABLY FORESEEABLE IMPACTS MAY EXCEED THIS HELMET'S CAPABILITY TO PROTECT AGAINST SEVERE INJURY OR DEATH.</p> <p>SNELL MEMORIAL FOUNDATION</p> <p>SAMPLE OF THIS HELMET MODEL HAS PASSED THE SNELL STANDARD AND IS SO CERTIFIED.</p>
<p>EA 2016</p>	 <p>WARNING</p> <p>SOME REASONABLY FORESEEABLE IMPACTS MAY EXCEED THIS HELMET'S CAPABILITY TO PROTECT AGAINST SEVERE INJURY OR DEATH.</p> <p>Elite Automotive Helmet Standard</p> <p>EA FOUNDATION</p> <p>SAMPLE OF THIS HELMET MODEL HAS PASSED THE SNELL STANDARD AND IS SO CERTIFIED.</p> <p>LIFE SUPPORT AND COMMUNICATION DEVICES HAVE NOT BEEN TESTED FOR SAFETY BY THE SNELL MEMORIAL FOUNDATION.</p>

<p>CMR 2016</p>	
<p>CMS 2016</p>	
<p>K 2015</p>	
<p>SA 2015</p>	
<p>SNELL SA2020</p>	 <p style="text-align: center;">SPECIAL APPLICATION HELMETS (SA2020)</p>
<p>SNELL M2020D</p>	 <p style="text-align: center;">MOTORCYCLE HELMETS (M2020D)</p>
<p>SNELL K2020</p>	
<p>SNELL 2020 R standard (NEW)</p>	
<p>ECE 22-06 Standard (NEW, more details on page 3)</p>	

Regulation ECE 22 requires every motorcycle helmet to bear a sticker sewn into or onto the retention system (aka: 'the chinstrap'). This sticker shows the homologation mark, the homologation number, and the production serial number. These are the most important features.



The homologation mark is shown in a circle: The uppercase 'E' followed by a number identifies the country that tested for and granted the homologation. For example: E3 is the mark found on helmets approved in Italy. It is important to note that E-mark approval is a financial question, so a helmet manufacturer varies approval institutions and countries depending on cost, and there is no link between the approval country and the manufacturing country.

Below the E-mark there are two numbers: the left number is the homologation number, where the first two digits stand for the 'amendment' under which the helmet model has been approved (06 represents the sixth amendment to regulation #22); the right number is the production serial number of the item. The production serial number may contain the production date. The helmet is required to have the year of manufacture, the size with a letter and in cm., and the make or model information, usually on a label in the helmet. For the visor it is a little simpler and it is enough to only show embossed on the visor the E-mark and the homologation number.

The letter in the middle between the two numbers shows the type approval:

- 'J' if the helmet does not have a lower face cover ('jet-style helmet')
- 'P' if the helmet has a protective lower face cover ('full-face helmet')
- 'NP' if the helmet has a non-protective lower face cover

Some 'flip-front' helmets are both 'J' and 'P' approved, meaning they are tested under the rules of both the 'jet' and the fully 'protective' type approvals. What it means to you is that those (and only those) flip-front helmets can be ridden with either the chin piece raised up or the chin piece lowered and locked in position. The flip-front helmets are not permitted in power boat racing.

Some of the approval countries by E-mark

- | | |
|---------------------|---------------------|
| E1: Germany | E9: Spain |
| E2: France | E10: Serbia |
| E3: Italy | E11: United Kingdom |
| E4: The Netherlands | E12: Austria |
| E5: Sweden | E13: Luxembourg |
| E6: Belgium | E14: Switzerland |
| E7: Hungary | E16: Norway |
| E8: Czech Republic | |